

PREPARE FOR EMERGENCIES

10 KEY MESSAGES for consular staff assisting nationals abroad

LEARN MORE about the EU-funded project, Migrants in Countries in Crisis: Supporting an Evidence-based Approach to Effective and Cooperative State Action on www.icmpd.org/MICIC

ENHANCE YOUR CAPABILITIES to act as first responder: ask the ICMPD-MICIC team to organise a training for your embassy! Contact: icmpd-micic@icmpd.org

Project funded by the EU Project implemented by ICMPD



1 Maintain **UPDATED COUNTRY PROFILES** on the country of destination and neighbouring countries.



Be in touch with **YOUR NATIONALS**



Encourage your nationals to register



Keep your nationals informed



Reach out to your nationals

3 Develop & regularly update **A CONTINGENCY PLAN** taking into consideration the **capacities and needs** of your nationals.

SCAN THE CODE AND DEVELOP YOUR INTERACTIVE CONSULAR CONTINGENCY PLAN!



Prepare for complex **RELOCATIONS / EVACUATIONS** and have alternative plans for:

- accommodation sites
- transportation
- routes

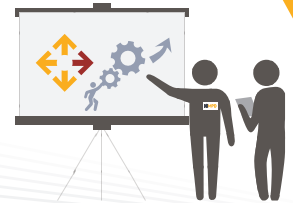
5 Draft a **CRISIS COMMUNICATION PLAN**

Always have two alternative communication channels.



Create and train a **CRISIS MANAGEMENT TEAM** and support teams.

Ask the ICMPD-MICIC team to organise a training for your embassy!



7 Build a **CRISIS NETWORK** before you need it. Keep your contact lists updated.



Prepare **CHECKLISTS** and verify:

- ✓ Logistical and financial requirements
- ✓ Resource inventory
- ✓ Equipment needed

9 Prepare **A CRISIS BUDGET** Anticipate that prices will rise dramatically during a crisis. For standardisation purposes, **USE ONLY ONE CURRENCY.**



Keep in mind **OTHER FACTORS** that could result from a disaster, such as:

Infrastructure failures

Staff availability



Communications, IT failures/restrictions

REACT TO EMERGENCIES

10 KEY MESSAGES for consular staff assisting nationals abroad

LEARN MORE about the EU-funded project, Migrants in Countries in Crisis: Supporting an Evidence-based Approach to Effective and Cooperative State Action on www.icmpd.org/MICIC

ENHANCE YOUR CAPABILITIES to act as first responder: ask the ICMPD-MICIC team to organise a training for your embassy! Contact: icmpd-micic@icmpd.org

Project funded by the EU Project implemented by ICMPD



1

Stay **CALM**, be composed, act normally.



Work **AS A TEAM**, internally and externally.



2

3

Enlist **SUPPORT OF MIGRANTS AND MIGRANT ORGANISATIONS** to assist with relocations/evacuations.

Migrants themselves can be the best resource



Keep in mind: **INFORMATION IS KEY**



Monitor the crisis



Stay ahead of the news



Fill the need for information to avoid rumours

4

5

Monitor **THE SITUATION** and your nationals' conditions. Provide **TARGETED ASSISTANCE** to vulnerable groups.



Maintain **CLOSE LIAISON** with:

- National authorities
- Relevant organisations



6

7

Report **DEVELOPMENTS** at post **REGULARLY** to home country office.



Obtain **DETAILS** from national authorities on:

Road restrictions



Rail restrictions



Airports situation



Ports situation



8

9

Be **AWARE** of:



Prioritise **THE EVACUATION OF NATIONALS** according to:

- Risk areas
- Vulnerabilities

10